

The TempTrust™ Extreme is the first passive container qualified to reach 168 hours at 2 to 8 C & 15-25 C for Canadian temperature profiles

The TempTrust Extreme Advantage

The TempTrust Extreme is the first platform to combine EPP & EPS material to create a packaging solution unlike any other.

Bounce-Back Technology™

Patented EPP memory material bounces back from dents & dings

Exceeds Regulations

120, up to 168 hours, multiple seasonal & temperature profiles

Ultra Lightweight

Easily one of the lightest on the market today

Recyclable

Recyclable outer shell can be shredded and remolded

Reusable

Qualified for multiple openings & maximum use



Surpass industry standards & fast track your packaging qualification

We are calling it a revolution in packaging development. Typical regulatory standards are adequate for setting a baseline package design. However, repeated studies show that without applying the knowledge of climatic conditions in the areas which products are shipped and stored, companies are missing a crucial element to designing qualification of packaging methods.



Infitrak has analyzed standard transportation modes in North America for over 10 years and documented thousands of data points, across all major origins and destinations. This expertise enables the company to offer solutions that exceed all industry standards, reduces failures and cut total-cost-of-ownership for shipping products. We call it the "Extreme" due to its ability to hold temperatures during the extremes of transit and storage.

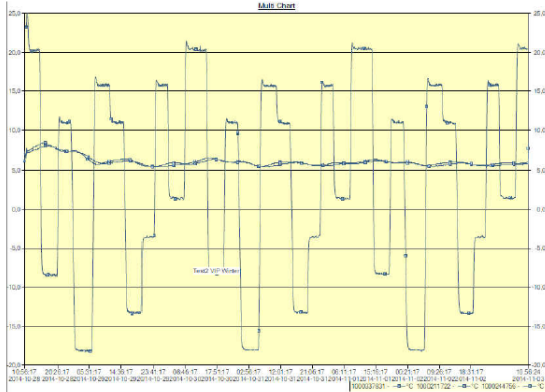
- ☑ **Fast-track your qualification** — Cut time-to-market by several months through proven data models from thousands of lane profiling and shipping studies.
- ☑ **Developed around key requirements** — From regulatory compliance to seasonal, transportation processes, and locations to types of insulating material, TempTrust Extreme utilizes it all to create your customized solutions.
- ☑ **Optimization: more than just a word** — Determine the right quantity of refrigerant, reduce container weights, optimize gel pack conditioning, & reduce pack-out failures.
- ☑ **Durability and recyclability** — We are so sure of the quality that we encourage product reconditioning for reuse that gives you the ability to reduce your cost-per-shipment to that of a single-use container.
- ☑ **Scalability to meet your needs** — Available in multiple sizes & configurations, as a fully qualified solution or separate components (EPS, EPP, corrugate, PCMs).
- ☑ **All reports included** — Every solution includes Qualification Reports (IQ and OQ). Seasonal Performance Qualifications available with minimum quantities.



**Qualified &
Validated**

TempTrust™ Extreme

120, 144 & 168 Hour Qualified Packaging Systems



Surpasses regulatory standards and reduces total cost-of-ownership

Every packaging solution is fully qualified against specific temperature profiles that take into account your transportation processes and geographical region.

The sample data set on the left demonstrates a qualification study for a 144 hour payload shipping system under a controlled temperature (2°C to 8°C) during the cold weather season.

Multiple sizes, seasons and pack-out options

The TempTrust Extreme line is available in three temperature performance ranges: 2°C to 8°C, 2°C to 25°C and 15°C to 25°C with custom profiles available for volume orders. Packaging is available as a complete solution (Corrugate, EPS, EPP, PCM, and vacuum panels) or can be ordered separately as components.

Model #	Ideal Applications	External Dimensions (inches)	Internal Dimensions (inches)	Payload Size (inches)	Net Weight (pounds)	EPS Wall Thickness (inches)	Seasonal Pack Outs Available	Boxes per Pallet
100 Extreme	Medium sized shipments	18.12 x 13.5 x 14	14.5 x 9.6 x 11.4	10.5 x 6 x 7.5 Or 12.5 x 7.5 x 8.5 Or	16	1.81	Summer, Spring, Fall & Winter	80
135 Extreme	Large shipments	22.13 x 16.9 x 20	16.6 x 11.38 x 15	13.5 x 8.25 x 12 Or 14.5 x 9.25 x 13 Or	22	2.5	Summer, Spring, Fall & Winter	20

*Payload based on PCM configuration

**All models available in additional durations

TempTrust was developed by Infitrak. Trusted leader in cold chain management

Since 2002 Infitrak has designed and developed comprehensive cold-chain solutions that protect a product's integrity and ensures patient and consumer safety. Infitrak is the only company with all three areas of compliance-based, temperature controlled services and products: packaging, consulting, and real-time monitoring. This translates into a team that is with you all the way from raw materials to end user. For more information, visit us at www.infitrak.com.



Ask About A Free Trial

**Want to know more?
Call Us Today.**

905.470.1318
866.421.8367

Website:
www.infitrak.com

Email:
sales@infitrak.com